

# Sochacki Sub-Watershed Study

## Frequently Asked Questions

Three Rivers Park District, in coordination with Golden Valley, Robbinsdale, and the Bassett Creek Watershed Management Commission, is conducting a sub-watershed assessment to identify water quality improvements for North Rice, South Rice and Grimes Ponds in Sochacki Park.

### **Where is Sochacki Park? What features does it offer?**

[Sochacki Park](#) is a 37-acre natural area located in Golden Valley and Robbinsdale. Three Rivers Park District operates it in partnership with the two cities. The park includes a paved trail, picnic shelter, and a dog off-leash area.

### **What areas are being studied?**

North Rice, South Rice and Grimes Ponds are being studied. The ponds are classified as shallow wetlands by the Minnesota Department of Natural Resources. As part of the two cities' stormwater management systems, the ponds and their sub-watershed area will be assessed before draining south into Bassett Creek (see map on the following page).

### **Why is the study taking place?**

Common to wetlands in urban areas, North Rice, South Rice and Grimes Ponds have high amounts of nutrients that contribute to algae growth, prompting concern from residents and park visitors. The assessment is the first step toward improving the ecological health, aesthetics, and overall condition of the wetlands and providing improved outdoor recreation and education opportunities.

### **What does the study involve?**

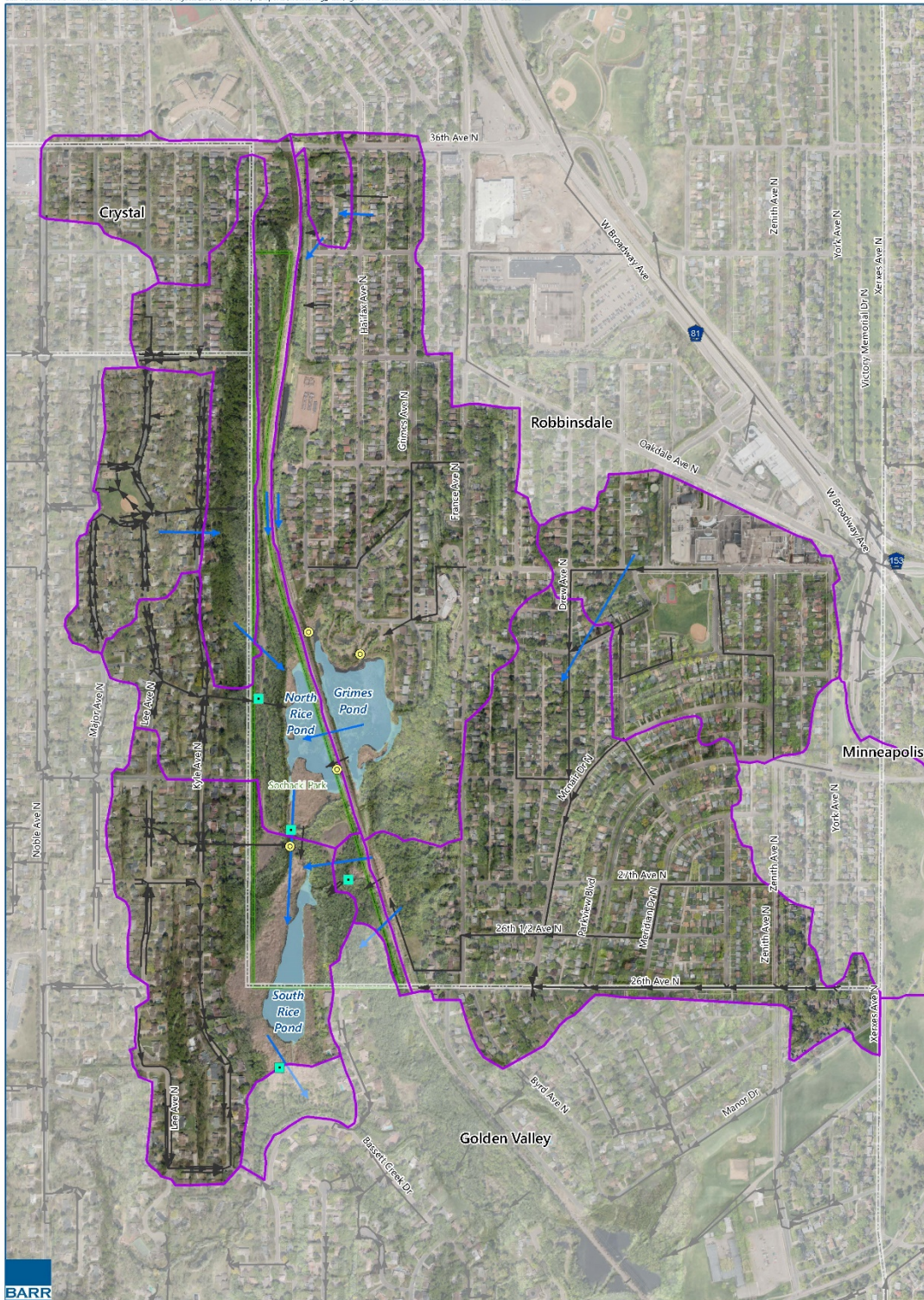
Three Rivers Park District Water Quality staff have placed water quality monitoring equipment at several locations in and around the park. Park guests and residents may occasionally observe Park District staff checking the monitoring equipment and collecting samples; the public is asked to refrain from disturbing the equipment. Parents are asked to encourage their children to leave the equipment alone when exploring the park. If you observe damage to any of the equipment, please contact Angie Smith, Three Rivers Park District Director of Natural Resources, at 763-694-7841 or [Angie.Smith@threeriversparks.org](mailto:Angie.Smith@threeriversparks.org).

### **What is the timeline for the study?**

The assessment began in spring 2020 and is expected to take two years to complete. A project steering committee, including representatives from the partner agencies, the consulting engineer, and a neighborhood citizen liaison, is meeting quarterly to help guide the process. When the assessment is complete, a report will detail the study's findings and recommend potential options and costs to improve water quality and ecological health of the area.

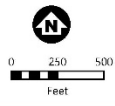
### **How can I get involved?**

Community engagement opportunities will be identified and scheduled when possible within social-distancing parameters. Three Rivers Park District staff will identify citizen-science opportunities once the assessment is complete. Check <https://www.threeriversparks.org/page/water-quality-improvement-projects> for updates or contact Jami Markle, Three Rivers Park District Director of Natural Resources, at 763-694-7841 or [Jami.Markle@ThreeRiversParks.org](mailto:Jami.Markle@ThreeRiversParks.org).



BARR

- Automated Monitoring Site
- Grab Sample Site
- Sochacki Park
- Municipal Boundary
- Subwatersheds
- Municipal Boundary
- Flow Direction
- Pipe
- Waterbodies



SUBWATERSHEDS &  
STORM SEWER  
Sochacki Park  
Subwatershed Assessment  
Three Rivers Park District

FIGURE 1